



# Stock Option Trading Platform User Manual

## Table of Content
















1) Installation	Page 3
2) Login	Page 5
3) Change of Password	Page 7
4) Logout	Page 8
5) Platform Status	Page 9
6) Order Placing Procedure	Page 10
7) Market Data	Page 14
8) P / L	Page 18
9) Settings	Page 19

## 1. Installation

- a) Please visit our company website  
([http://www.sorrento.com.hk/trading\\_system.php](http://www.sorrento.com.hk/trading_system.php))

- b) Click Stock Option Trading Program Download

### Trading System

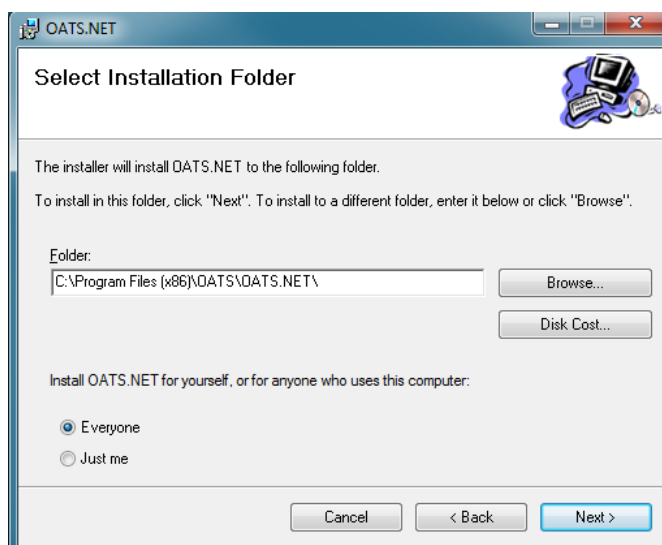
Platform	Program Download	Program User Guide	2FA Mobile App Download	2FA Mobile App User Guide
Web Trading			 	
Stock Option Trading			 	
Mobile Application	 		 	

- c) Run the .exe file once completed download

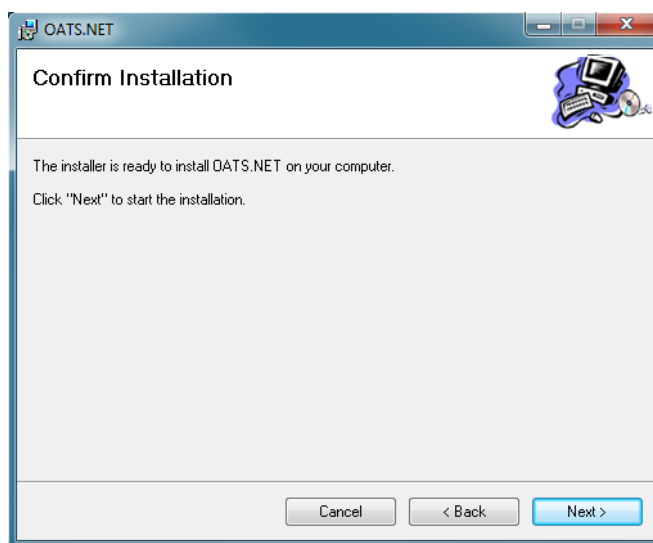
- d) Click **【Next >】** in below picture



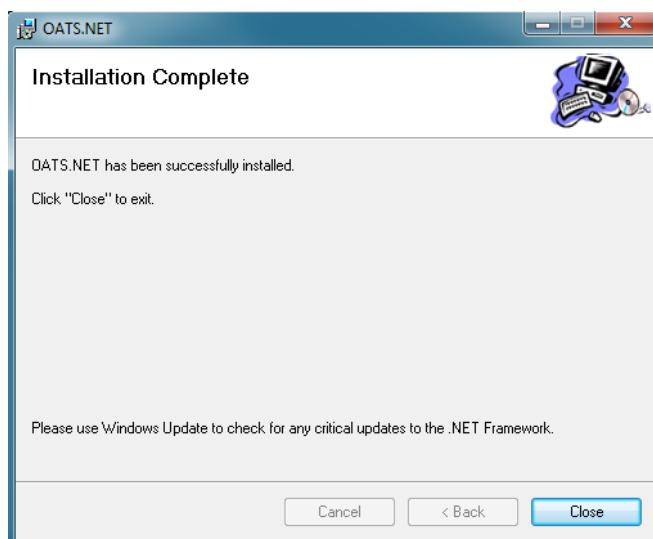
- e) Click **【Everyone】** , than **【Next >】** in below picture



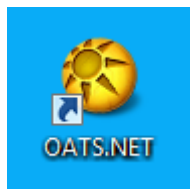
- f) Click **【Next >】** for installation



- g) Click **【Close】** once completed installation



- h) Double click the **【OATS.NET】** icon on desktop to open Stock Option Trading Platform

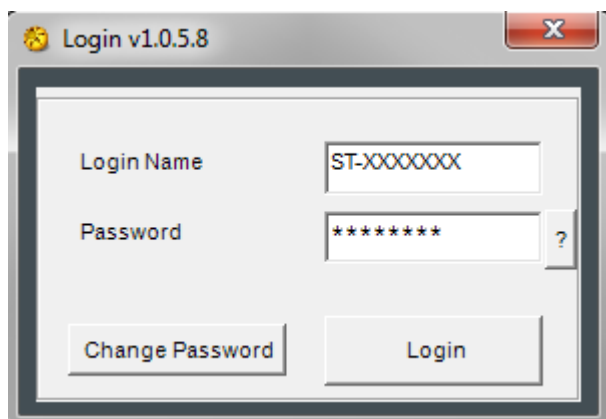


## 2. Login

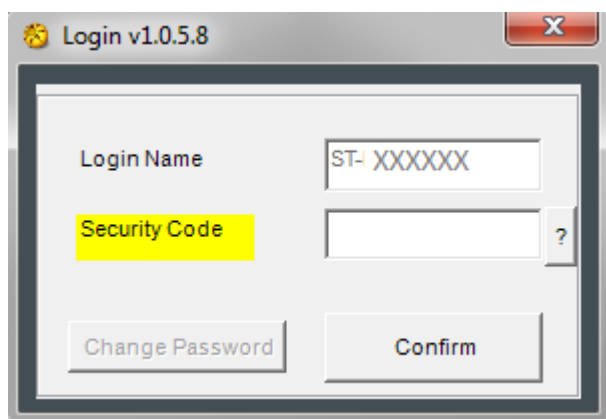
- a) Open Stock Option Trading Platform 【OATS.NET】
- b) Click 【OK】 after selected Language



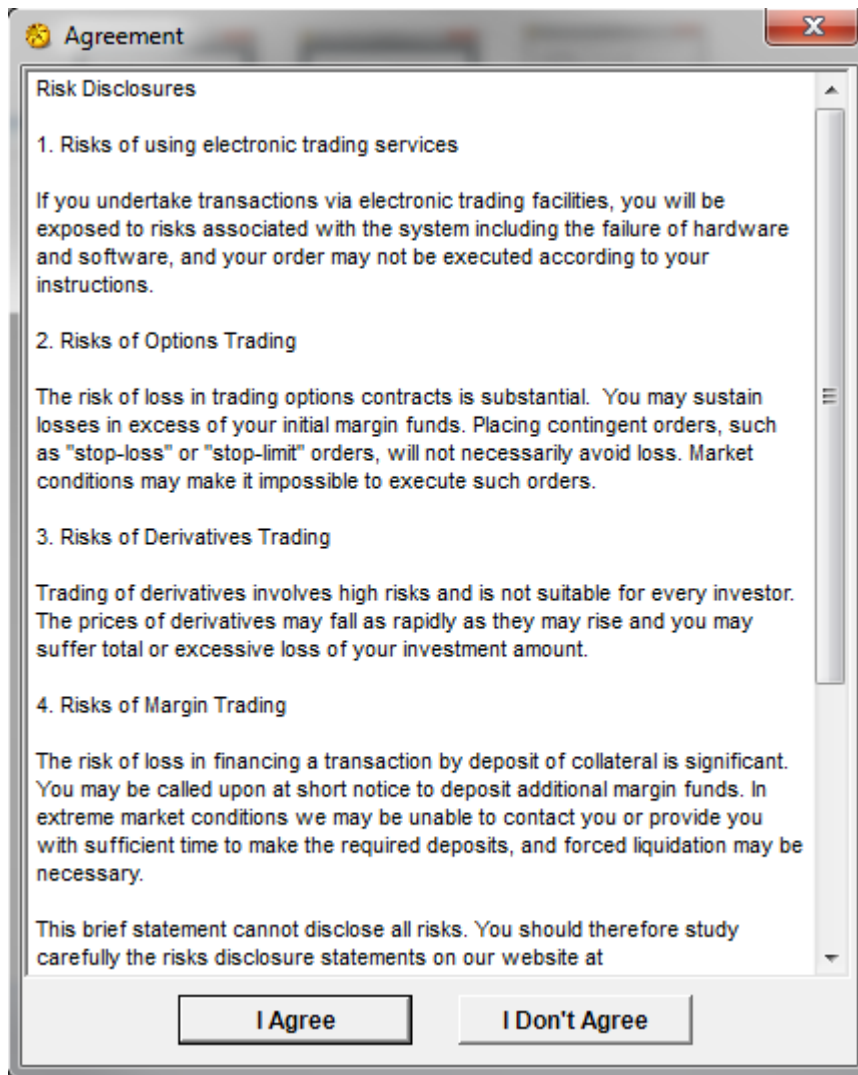
- c) Input Login Name and Password , then click 【Login】



- d) Input Security Code, then click【 Confirm】. Regarding the Security Code, please refer to "[2FA Mobile App User Guide](#)"

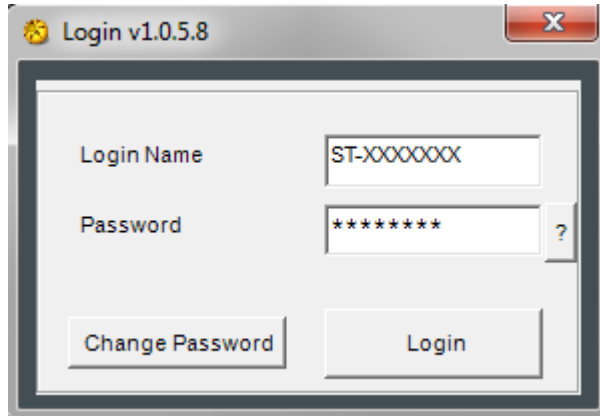


- e) Please read the Agreement carefully and click【I Agree】to enter into the Stock Option Trading Platform

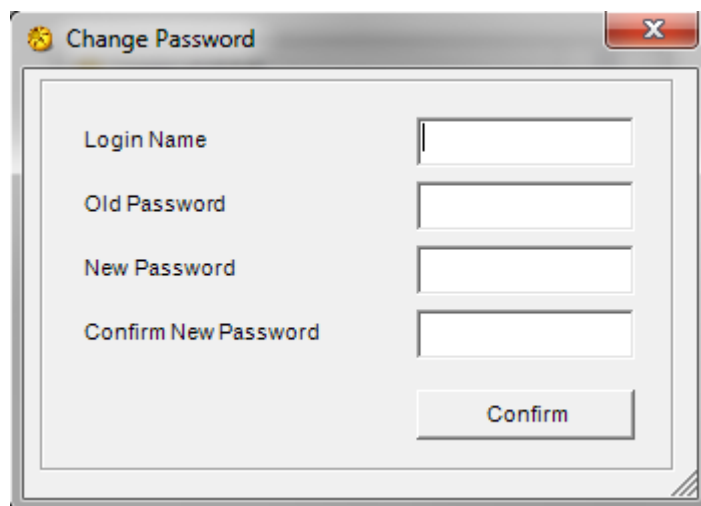


### 3. Change of Password

- a) Open Stock Option Trading Platform 【OATS.NET】
- b) Click 【OK】 after selected Language

A screenshot of a Windows-style application window titled "Login v1.0.5.8". The window has a standard title bar with a close button (X) in the top right corner. Inside the window, there are two text input fields. The first field is labeled "Login Name" and contains the text "ST-XXXXXXX". The second field is labeled "Password" and contains seven asterisks "\*\*\*\*\*". To the right of the password field is a small button with a question mark "?". Below the input fields are two buttons: "Change Password" on the left and "Login" on the right.

- c) Click 【Change Password】

A screenshot of a Windows-style application window titled "Change Password". The window has a standard title bar with a close button (X) in the top right corner. Inside the window, there are four text input fields stacked vertically. The first field is labeled "Login Name". The second field is labeled "Old Password". The third field is labeled "New Password". The fourth field is labeled "Confirm New Password". Below these fields is a button labeled "Confirm".

- d) Click 【Confirm】 after input the old & new password

#### Remarks :

- When first time login, please use system generated password to login first, then client can change their own password afterward
- The length of password should be within 6 - 8 digits and includes letters and digits
- Once changed password, please logout and re-login the OATS.NET in order to validate the new password

#### 4. Logout

- a) If want to logout the Stock Option Trading Platform, just clicking **【X】** at the top right corner

Advanced Trader (Stock Option) [1.0.5.8] (User: )

ID : CKH90.00Q8 S Show (1) CKH90.00Q8 - MAY 2018 PUT

Sett. Price	Open	High	Low	Last	Volume	Turnover
0.94	0.97	1.50	0.97	1.05	1	89

Order: W P O Recover Orders

Contract: CKH90.00Q8 S A/C S

Price: 1.01 OPEN CLOSE

Quantity: 1 +1 -1

BUY SELL Save

Market Data P/L Stored Order Stock Asset Chart Settings Message

Market Data Default User Defined1 User Defined2 User Defined3

Margin Table Month Code P/L and Margin Show Settings Show Settings Show Settings Show

CHEUNG KONG HUTCHISON (CKH)

Stock No. 1 CKH Months Year MAY 2018 Center 90.00 Range of strikes 10

Display Mode Price Stock Code Last Turnover Pre Cls Lot Size Show

T.O.	Last	B.Qty	Bid	Ask	A.Qty	Strike	B.Qty	Bid	Ask	A.Qty	Last	T.O.
0	0.00	0	0.00	0.00	0	CKH67.50 MAY 18	0	0.00	0.03	3	0.00	0
0	0.00	0	0.00	0.00	0	CKH70.00 MAY 18	0	0.00	0.08	15	0.00	0
0	0.00	0	0.00	0.00	0	CKH72.50 MAY 18	0	0.00	0.05	15	0.00	0
0	0.00	0	0.00	0.00	0	CKH75.00 MAY 18	0	0.00	0.02	15	0.00	0
0	0.00	0	0.00	0.00	0	CKH77.50 MAY 18	0	0.00	0.03	34	0.02	8
0	0.00	0	0.00	0.00	0	CKH80.00 MAY 18	16	0.01	0.04	16	0.00	0
0	0.00	0	0.00	0.00	0	CKH82.50 MAY 18	37	0.03	0.06	22	0.07	18
0	0.00	16	5.00	5.20	16	CKH85.00 MAY 18	31	0.08	0.11	49	0.11	28
0	0.00	16	2.89	2.89	16	CKH87.50 MAY 18	94	0.25	0.31	77	0.37	216
9	0.85	61	1.01	1.09	47	CKH90.00 MAY 18	46	1.00	1.09	15	1.05	89
62	0.31	60	0.28	0.32	49	CKH92.50 MAY 18	31	2.72	2.90	16	2.90	45
0	0.00	79	0.09	0.12	34	CKH95.00 MAY 18	0	0.00	0.00	0	0.00	0
0	0.00	31	0.03	0.05	15	CKH97.50 MAY 18	0	0.00	0.00	0	8.10	2
0	0.00	42	0.02	0.04	30	CKH100.00 MAY 18	0	0.00	0.00	0	0.00	0
0	0.00	0	0.00	0.03	35	CKH102.50 MAY 18	0	0.00	0.00	0	0.00	0
0	0.00	0	0.00	0.02	15	CKH105.00 MAY 18	0	0.00	0.00	0	0.00	0

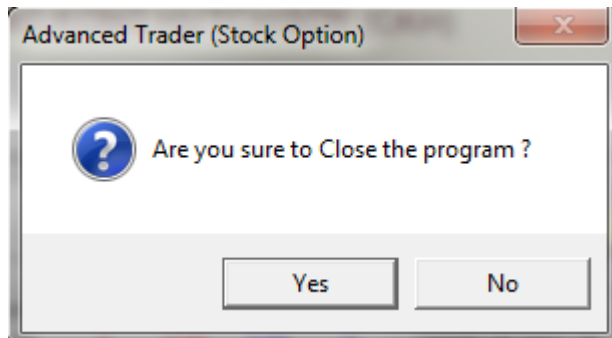
Outstanding Pending Need My Appro P Cancel

Contract Price BQ AQ O/C A/C Status

Done M100025 A/C My Orders Done Print

Contract E.Price O.Price BQ AQ O/C A/C

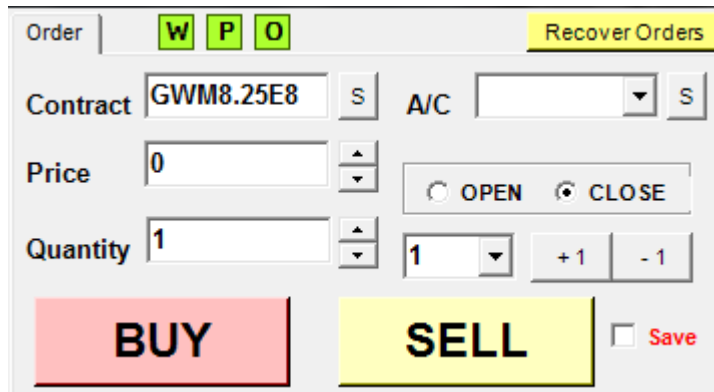
- b) Click **【Yes】** to close the trading platform





## 5. Platform Status

- a) There are three types of connection status shown on the top right area
  - i. W: Server Connection
  - ii. P: Price Feed Connection
  - iii. O: Order Feed Connection
- b) If W, P and O shown in Green color, it is represented the platform connection is stable



The screenshot displays the OATS.NET trading interface. At the top, there are three green buttons labeled 'W', 'P', and 'O', indicating a stable connection for the Server, Price Feed, and Order Feed respectively. To the right of these buttons is a yellow button labeled 'Recover Orders'. Below the connection status, the interface includes fields for 'Contract' (GWM8.25E8), 'A/C' (Account), 'Price' (0), and 'Quantity' (1). There are also buttons for 'BUY' (red) and 'SELL' (yellow), and a 'Save' checkbox. The 'OPEN' and 'CLOSE' buttons are also visible.

- c) Otherwise, if W, P and O shown in Red color, it is represented the platform connection is failure. If client faced this situation, please restart the 【OATS.NET】 first, if the situation still exist, please call our hotline 3959 - 9800

## 6. Order Placing Procedure

- a) Click 『Market Data』 in below picture, click 【Stock No.】 to choose the stock you want first, then click the 【Months Year】. After that, click 【Show】 to view the contracts

**Market Data**

Default User Defined1 User Defined2 User Defined3

Settings Settings Settings Settings

Margin Table Month Code P/L and Margin Show Show Show Show

**CHEUNG KONG HUTCHISON (CKH)**

Stock No. 1 CKH Months Year MAY 2018 Center 90.00 Range of strikes 10

Display Mode Price \* Stock Data Delay At least Refresh

Stock Code	Last	Turnover	Pre Cls	Lot Size
1	89.75	0.3B	90.00	500

**Show**

Call Option						Put Option						
T.O.	Last	B.Qty	Bid	Ask	A.Qty	Strike	B.Qty	Bid	Ask	A.Qty	Last	T.O.
0	0.00	0	0.00	0.00	0	CKH67.50 MAY 18	0	0.00	0.03	3	0.00	0
0	0.00	0	0.00	0.00	0	CKH70.00 MAY 18	0	0.00	0.08	15	0.00	0
0	0.00	0	0.00	0.00	0	CKH72.50 MAY 18	0	0.00	0.05	15	0.00	0
0	0.00	0	0.00	0.00	0	CKH75.00 MAY 18	0	0.00	0.02	15	0.00	0
0	0.00	0	0.00	0.00	0	CKH77.50 MAY 18	0	0.00	0.03	34	0.02	8
0	0.00	0	0.00	0.00	0	CKH80.00 MAY 18	16	0.01	0.04	31	0.00	0
0	0.00	0	0.00	0.00	0	CKH82.50 MAY 18	22	0.03	0.07	45	0.07	18
0	0.00	0	0.00	0.00	0	CKH85.00 MAY 18	15	0.08	0.11	49	0.11	28
0	0.00	16	2.71	2.91	16	CKH87.50 MAY 18	45	0.25	0.29	20	0.27	218
9	0.85	76	1.01	1.10	15	CKH90.00 MAY 18	47	0.98	1.05	2	1.05	89
62	0.31	30	0.28	0.33	49	CKH92.50 MAY 18	31	2.68	2.88	31	2.90	45
0	0.00	79	0.09	0.13	51	CKH95.00 MAY 18	16	4.99	5.19	16	0.00	0
0	0.00	31	0.03	0.07	26	CKH97.50 MAY 18	0	0.00	0.00	0	8.10	2
0	0.00	42	0.02	0.04	30	CKH100.00 MAY 18	0	0.00	0.00	0	0.00	0
0	0.00	0	0.00	0.03	35	CKH102.50 MAY 18	0	0.00	0.00	0	0.00	0
0	0.00	0	0.00	0.02	15	CKH105.00 MAY 18	0	0.00	0.00	0	0.00	0

- b) When clicking the selected contract in 『Market Data』, the contract price feed will show on the top. For example, if selected CK HUTCHISON HOLDINGS LTD. Call Option May 2018, the contract code is 【CKH90.00E8】, the platform will show as below picture :

ID: CKH90.00E8 S Show (1) CKH90.00E8 - MAY 2018 CALL

Sett. Price	Open	High	Low	Last	Volume	Turnover
1.04	0.80	0.85	0.80	0.85	4	9

Add to Calculator

Quote Request

Bid 5	Bid 4	Bid 3	Bid 2	Bid 1	Ask 1	Ask 2	Ask 3	Ask 4	Ask 5
0.00	0.00	0.00	0.00	0.38	0.00	0.00	0.00	0.00	0.00
0	0	0	0	10	0	0	0	0	0

- c) If there are no price on the contract, please click **【Quote Request】** to ask for the price
- d) Just click the price from price depth, the contract, price and quantity will auto-fill into order placing area. And then input account number, **【OPEN】** or **【CLOSE】** , and click **【BUY】** or **【SELL】** to place order

Order **W P O** Recover Orders

Contract   A/C

Price   ☒

Quantity

**BUY** **SELL** ☐ Save

- e) A confirmation ticket will show up allowing client to double check the order details. If it is confirmed, click **【Confirm】** to send out order to market

**BUY OPEN CALL 5**

CONTRACT	CKH90.00E8
PRICE	0.38
QUANTITY	1
A/C	MXXXXXX
MARGIN REQ	0.00
PREMIUM	-190.00
NAME	Testing A/C

- f) The Order Status will show at the right-hand-side of the platform
- The upper area showing the outstanding orders. If client have enough amount, the order will show in Outstanding; if don't, the order will show in Pending
  - The lower area showing the completed order includes Done order and Cancelled order

Outstanding							Pending	Need My Appro	P	Cancel
Contract	Price	BQ	AQ	O/C	A/C	Status				
CKH85.00Q8	0.01	1		O	MXXXXXX	Outstand				

Done							MXXXXX	A/C	My Orders	Done	Print
Contract	E.Price	O.Price	BQ	AQ	O/C	A/C					
CKH85.00Q8		0.01	1		O	MXXXXX					

g) Amend / Cancel Order

- i. Double click the outstanding order will show up below window for order amendment or cancellation
- ii. Price and Quantity could be amended in this window, but the New Quantity could only reduced
- iii. After amendment, click【Amend】to confirm the order, click 【Withdraw】 to cancel the order or click 【X】 to cancel the amendment

Cancel Order

Contract CKH85.00Q8

Price 0.01

Buy/Sell BUY

Original Quantity 1

New Quantity 1

Account MXXXXXX

Order Number 13492384

OPEN

Amend

Withdraw

X

h) Save Order Records (『Print』 button)

- i. If want to print out the order records, click 【Print】 then 【Confirm】

Print & Save

☒ Print ☐ Save File

Confirm

- ii. If want to save in computer, click 【Save File】 then 【Confirm】

Print & Save

☐ Print ☒ Save File

Confirm

## 7. Market Data

- a) Click 『Market Data』 in below picture, click 【Stock No.】 to choose the stock you want first, then click the 【Months Year】. After that, click 【Show】 to view the contracts

Market Data | P / L | Stored Order | Stock Asset | Chart | Settings | Message

### Market Data

Default    User Defined1    User Defined2    User Defined3

Margin Table    Month Code    P/L and Margin    Show    Settings Show    Settings Show    Settings Show

#### CHEUNG KONG HUTCHISON (CKH)

Stock No. 1 CKH    Months Year MAY 2018    Center 90.00    Range of strikes 10

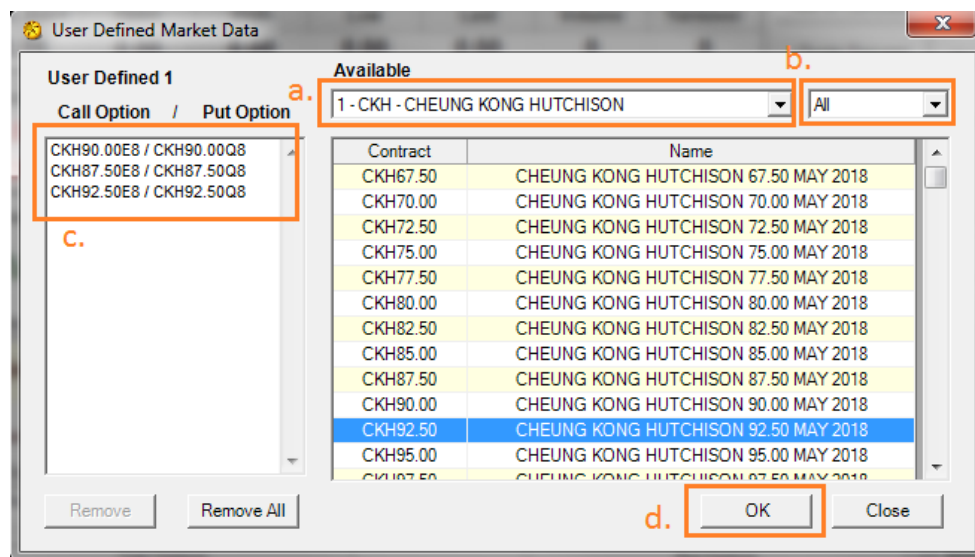
Display Mode Price    \* Stock Data Delay At least Refresh

Stock Code	Last	Turnover	Pre CIs	Lot Size
1	89.75	0.3B	90.00	500

Show

Call Option						Put Option						
T.O.	Last	B.Qty	Bid	Ask	A.Qty	Strike	B.Qty	Bid	Ask	A.Qty	Last	T.O.
0	0.00	0	0.00	0.00	0	CKH67.50 MAY 18	0	0.00	0.03	3	0.00	0
0	0.00	0	0.00	0.00	0	CKH70.00 MAY 18	0	0.00	0.08	15	0.00	0
0	0.00	0	0.00	0.00	0	CKH72.50 MAY 18	0	0.00	0.05	15	0.00	0
0	0.00	0	0.00	0.00	0	CKH75.00 MAY 18	0	0.00	0.02	15	0.00	0
0	0.00	0	0.00	0.00	0	CKH77.50 MAY 18	0	0.00	0.03	34	0.02	8
0	0.00	0	0.00	0.00	0	CKH80.00 MAY 18	16	0.01	0.04	31	0.00	0
0	0.00	0	0.00	0.00	0	CKH82.50 MAY 18	22	0.03	0.07	45	0.07	18
0	0.00	0	0.00	0.00	0	CKH85.00 MAY 18	15	0.08	0.11	49	0.11	28
0	0.00	16	2.71	2.91	16	CKH87.50 MAY 18	45	0.25	0.29	20	0.27	218
9	0.85	76	1.01	1.10	15	CKH90.00 MAY 18	47	0.98	1.05	2	1.05	89
62	0.31	30	0.28	0.33	49	CKH92.50 MAY 18	31	2.68	2.88	31	2.90	45
0	0.00	79	0.09	0.13	51	CKH95.00 MAY 18	16	4.99	5.19	16	0.00	0
0	0.00	31	0.03	0.07	26	CKH97.50 MAY 18	0	0.00	0.00	0	8.10	2
0	0.00	42	0.02	0.04	30	CKH100.00 MAY 18	0	0.00	0.00	0	0.00	0
0	0.00	0	0.00	0.03	35	CKH102.50 MAY 18	0	0.00	0.00	0	0.00	0
0	0.00	0	0.00	0.02	15	CKH105.00 MAY 18	0	0.00	0.00	0	0.00	0

b) Click **【Settings】** under 『User Defined』 will show up below window



- i. Select Stock Option Contract
  - ii. Select Months and Year
  - iii. Show up selected Contracts
  - iv. Click **【OK】** to save
- c) Stock Option Trading Platform provides 3 『User Defined』 lists and up to 30 Contracts per list

d) Click 【Margin Table】 under 『Market Data』 will show up below window

Margin Table

1 - CKH - CHEUNG KONG HUTCHISON MAY 2018 CALL

Last Update: 5/17/2018 11:16:46 AM

Contract	Settlement Price	Delta	Last Price	Margin Per Lot
CKH67.50E8	22.28	1	0.00	14,123
CKH70.00E8	19.78	1	0.00	12,873
CKH72.50E8	17.28	1	0.00	11,623
CKH75.00E8	14.78	1	0.00	10,375
CKH77.50E8	12.28	1	0.00	9,125
CKH80.00E8	9.79	0.98	0.00	7,877
CKH82.50E8	7.29	0.97	0.00	6,627
CKH85.00E8	4.97	0.88	0.00	5,400
CKH87.50E8	2.68	0.75	2.57	4,095
CKH90.00E8	1.03	0.48	0.00	2,953
CKH92.50E8	0.26	0.21	0.00	2,223
CKH95.00E8	0.04	0.08	0.00	1,659
CKH97.50E8	0.01	0.04	0.00	1,162

Contract - Contract Qty 1

Margin Per Lot - Total Margin

Refresh

Delta and Implied Volatility are calculated from underlying and option market price. No adjustments was made regarding futures dividend. All data are for reference only

e) Click 【Month Code】 under 『Market Data』 will show up below window for reference

Month Code

	CALL	PUT	FUTURE
JAN	A	M	F
FEB	B	N	G
MAR	C	O	H
APR	D	P	J
MAY	E	Q	K
JUN	F	R	M
JUL	G	S	N
AUG	H	T	Q
SEP	I	U	U
OCT	J	V	V
NOV	K	W	X
DEC	L	X	Z



- f) Click **【P/L and Margin】** under 『Market Data』 will open Stock Option Calculator, it can calculate the required margin of all contracts and related P/L chart

**P/L Chart and Margin Calculator**

Contract	Call/Put	LotSize	BuyQty	SellQty	NetQty	CoveredQty
CKH90.00E8	CALL	500	0	1	-1	0
CKH87.50Q8	PUT	500	0	1	-1	0

**C. Remove** **Remove All**

**Add to Calculator** **Import Position** **Amend Contract**

**CONTRACT**  **S**

**Buy / Sell**

**Quantity**

**Covered**

**Add**

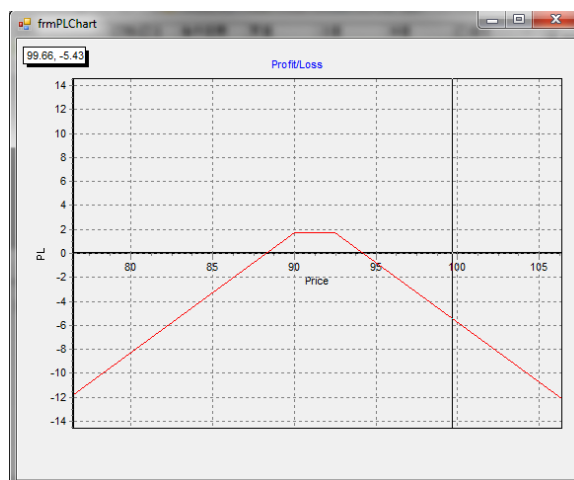
**Hedge A/C**

**P/L Chart** **CalMargin**

**Margin (Settled)**

**\$ 5,290.10**

- Add Stock Option Contract to Calculator, Import Position or Amend Contract
- Show up the selected Contracts
- Remove the selected Contracts
- Click **【CalMargin】** to calculate the margin requirement
- Open the P/L Chart



**8. P / L**

In 'P / L' , will show the position of client, Cash in/out amount and P / L of position

Market Data | P / L | Stored Order | Stock Asset | Chart | Settings | Message

## Average Price (For Indicative Purpose Only)

Account a. S Show b.

☐ Show Day Trade Only

**Indicative Equity**

Cash TRF	Cash DR/CR	Balance	Equity	Disc.Stock(Uncove	Allowance
0.00	0.00	11,958.00	11,958.00	0.00	0.00

c.

Available Balance	Initial Margin	Maintenance Margin
11,958.00	0.00	0.00

**P / L** d.

Long Option	Short Option	Net Amount	Previous Net Amt	P / L (DT)	P / L (ALL)	Print
8,200	0	8,200.00	8,200.00	0	-2,400.00	

e.	Contract	BQ	AQ	NetQ	Last P	Set P	MVL	MVS	Margin	Cover	AV Buy	AV
1109	CRL32.00E8	10	0	10	0.00	0.18	3,600.00		0.00	0	0.220	
2007	COG17.00E8	4	0	4	0.00	0.20	4,000.00		0.00	0	0.250	
2333	GWM8.25E8	30	0	30	0.04	0.04	600.00		0.00	0	0.080	

- a. Show up the Account Number
- b. It will update the position when clicking **【Show】**
- c. 『Available Balance』 is the cash client could use
- d. Long Option - Show total amount of Long Option  
Short Option - Show total amount of Long Option  
Net Amount - Long Option + Short Option  
Previous Net Amount - Show the previous date of Net Amount  
P / L (DT) - Show the intraday P / L  
P / L (ALL) - Show total P / L of position
- e. Show the client position

## 9. Settings

It can adjust some platform settings in 『Settings』

- a. Default Quantity – the default quantity of every order placing
- b. Max Default Quantity – the maximum quantity of each order placing. Determined by Sorrento Securities and subject to each client
- c. Pop Up for Done Order – there are done order confirmation window pop up when the order just done
- d. Sound for Done Order – there are a sound when order done and triggered the price alert
- e. Auto-Fill Closable Contract Quantity – it will auto-fill the closeable contract quantity in the order placing area when click the contract in position
- f. Input Price Deviation Warning (pt) – it will show up a warning message when input price is deviated the preset price point from market price
- g. Input Price Deviation Warning (%) – same function with Input Price Deviation Warning (pt) but calculate in percentage
- h. Initial Market Data As – it can set the 『Default』, 『User Defined 1』, 『User Defined 2』 or 『User Defined 3』 of Market data when open OATS.NET
- i. Click 【Set】 to save above settings

Market Data | P / L | Stored Order | Stock Asset | Chart | Settings

Enter Order Settings

a. Default Quantity

b. Max Default Quantity

c. Pop Up for Done Order ☒

d. Sound for Done Order ☒

e. Auto-Fill Closable Contract Quantity ☐

f. ☒ Input Price Deviation Warning (pt) >

g. ☒ Input Price Deviation Warning (%) >

h. Initial Market Data As

i.

— Finish —